

Multi-Jurisdiction Crisis Intervention Task Force Increases Collaboration Between Police & Mental Health

Don Kamin, Ph.D.¹ & Chief Thomas Voelkl²

¹ Monroe County Office of Mental Health & Coordinated Care Services, Inc.

² Brighton Police Department & Monroe County Law Enforcement Council
Rochester, New York

*2008 CMHS National GAINS Center Conference
Creating More Effective Services*

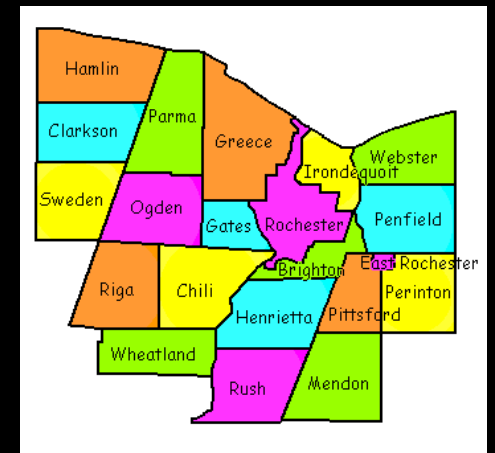
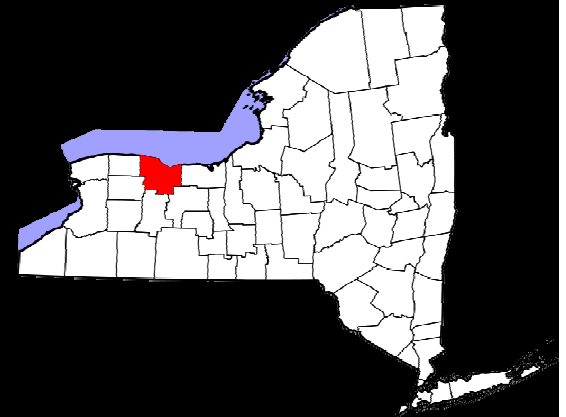
*March 18-20, 2008
Washington, D.C.*

Overview / Outline

- Setting the Context: Monroe County
- Time-Line
- Rochester's CIT (EDPRT)
- Expanding concept county-wide
- Outcomes
- Summary / Implications
- Questions & Answers

Monroe County, New York

- Population: 740,000
- Sheriff's Dept: ~ 270 Patrol deputies
- Rochester Police Department: ~700
- 9 Other Suburban Departments
 - Range from 10 -100



Time-Line

- Summer, 2003 – Adverse incidents with City Police
- March, 2004 – 1st CIT Class for City Police (60 hours)
Other jurisdictions invited to participate
- January, 2005 – 2nd CIT class (80 hours)
- December, 2005 – 3rd CIT class (80 hours)
- June, 2006 – 1st Regional CIOT class (40 hours)
- Fall, 2006 – Need for suburban support identified
- March, 2007 – 2nd Regional CIOT class (40 hours)



DR. CEDRIC L. ALEXANDER
Deputy Commissioner
Office of Public Safety



STATE OF NEW YORK
GEORGE E. PATAKI, GOVERNOR



RICHARD P. MIRAGLIA, LCSW
Associate Commissioner
Division of Forensic Services



Rochester's EDPRT: Like Other Specialized Teams

- Training Days
 - Training (Refreshers & New Topics)
 - 'System Refinement' (Police & Mental Health)
 - Case Reviews
- E-mail / phone contact with:
 - Mental Health System Liaison
 - Agency Contacts
- Documentation
 - Database

EDPRT Outcomes

- Lower arrest rates ¹
- Decreased use of force ¹
- Decreased officer & citizen injuries ¹
- Changes in knowledge & stigma ²
- Changes in self-efficacy ²
- Supervisor & co-worker support ²

¹ Alexander & Weaver (2005). *2004-2005 Annual Report: Emotionally Disturbed Persons Response Team*. Rochester Police Department, Rochester, New York

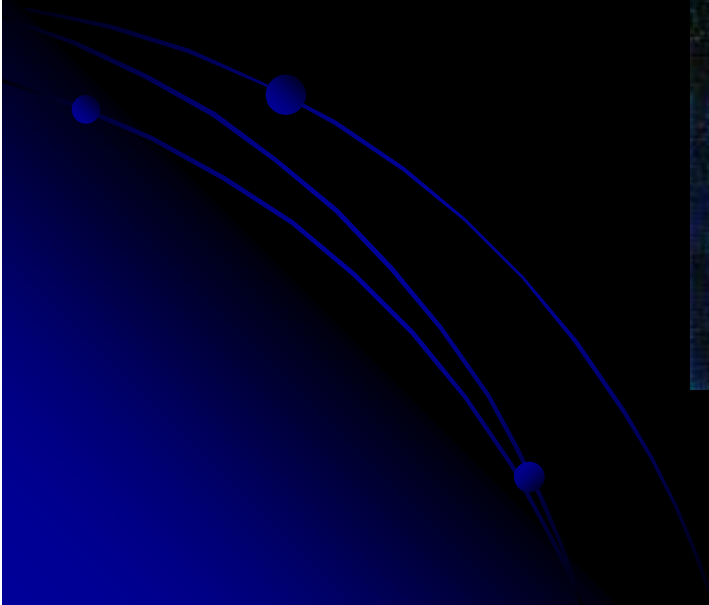
² Kamin et al. (2006) Assessment of Crisis Intervention Team Training Outcomes. Paper presented at the 2006 National GAINS Center Conference, Boston, MA.

Attendees from Other Departments Lacked:

- Knowledge of who to contact for:
 - System concerns & ongoing dialogue
 - Client / Citizen concerns
- Opportunity to review & improve interventions
- Ongoing mental health training
- Forum to address related issues



A Bright Idea





“How can we expand the EDPRT
concept County-wide...?”

“The Training is good, but...”



3 Essential Elements for CIT¹

1. Specially trained police officers
2. Partnerships with community
3. Ongoing team activities
 - Training, case reviews, system refinement

¹ For a more complete discussion of essential CIT elements see Schwarzfeld, M., Reuland, M., & Plotkin, M (2007). *Improving Responses to People with Mental Illnesses: The Essential Elements of a Specialized Police-Based Program (Draft)*. Available at <http://consensusproject.org/downloads/le-essentialelements.pdf>

Proposal to Law Enforcement Council

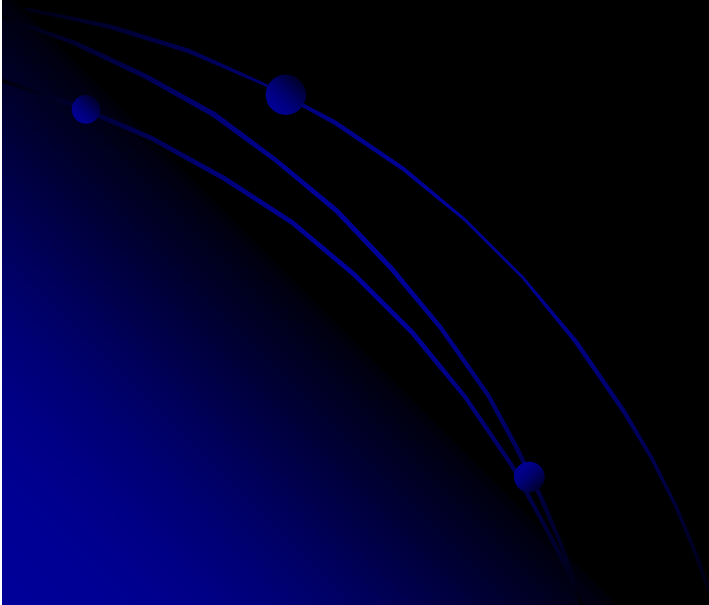
- **Multi-Jurisdiction Crisis Intervention Task Force**
 - All 11 departments designate “Mental Health Liaison Officers”¹
 - Mental Health System Representation
 - Bi-monthly Task Force meetings
 - “System Issues”
 - Review Individual Situations
 - Training
 - Policy/Procedures
 - Explore ‘mutual aid’

¹ Cordner, G. (2006) *People with mental illness*. Problem-Oriented Guides for Police (No. 40). US Department of Justice, Office of Community Oriented Policing

Task Force Mission

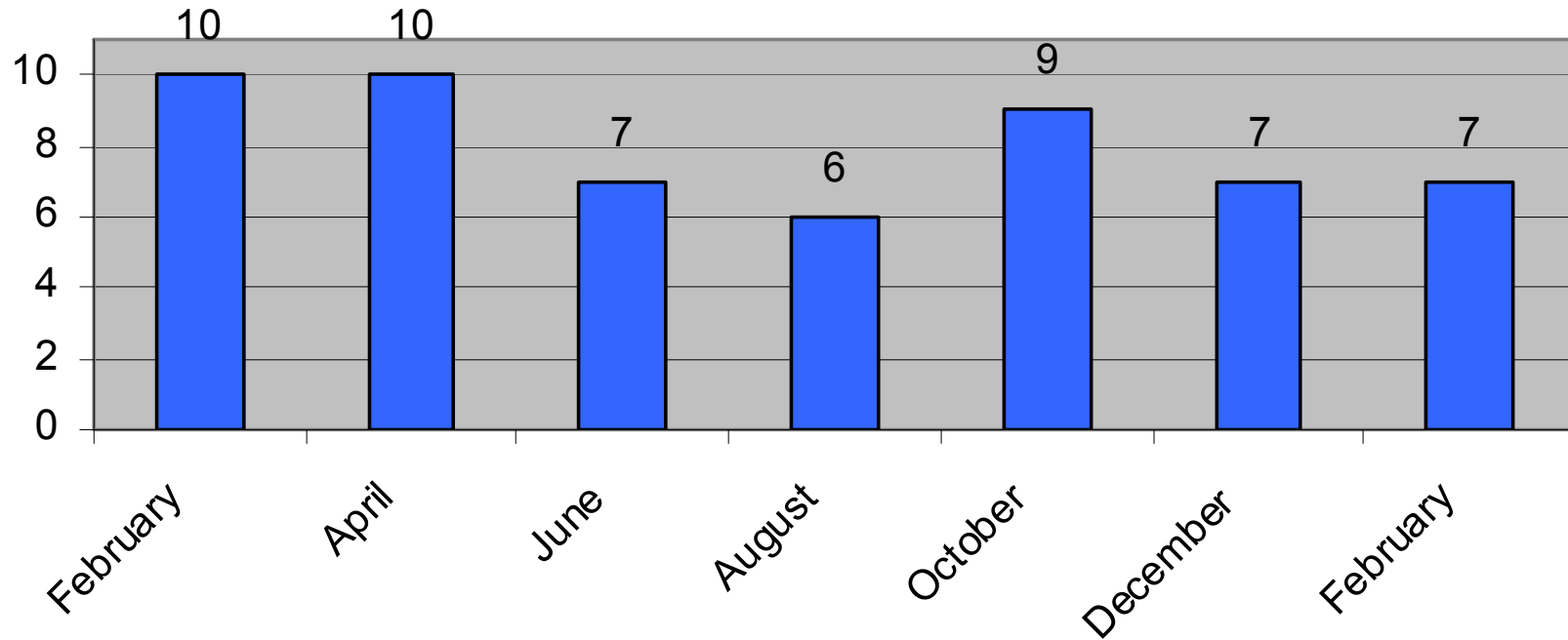
... to support and promote specialized responses within independent police agencies to individuals exhibiting signs of emotional disturbance. ... provide a forum that addresses training, standardization of procedures, and the interface between law enforcement and the mental health provider community...

Outcomes



Attendance: Feb '07 – Feb '08

Departments Represented



There are 11 Police Agencies in the County

First Steps

- Established points of contact
 - Phone # & e-mail list
- Increased understanding of “the system”
 - Where to go & who to call
- Increased contact with mental health
 - Ride-alongs



Topics Addressed

- Desire for county-wide database
- NYS Mental Hygiene Law
 - Revamped MHA procedure for county
- Mental Health Court (coordinator attended)
- HIPAA (& law enforcement exclusions)
- Development of a model 'general order'
- System issues (e.g., wait in EDs)
- *Case Reviews*

Outcomes (continued)

Measuring Collaboration ¹

¹Adopted from “Levels of Collaboration Survey” in Frey et al. (2006) Measuring collaboration among grant partners. *American Journal of Evaluation*, 27, 383-392

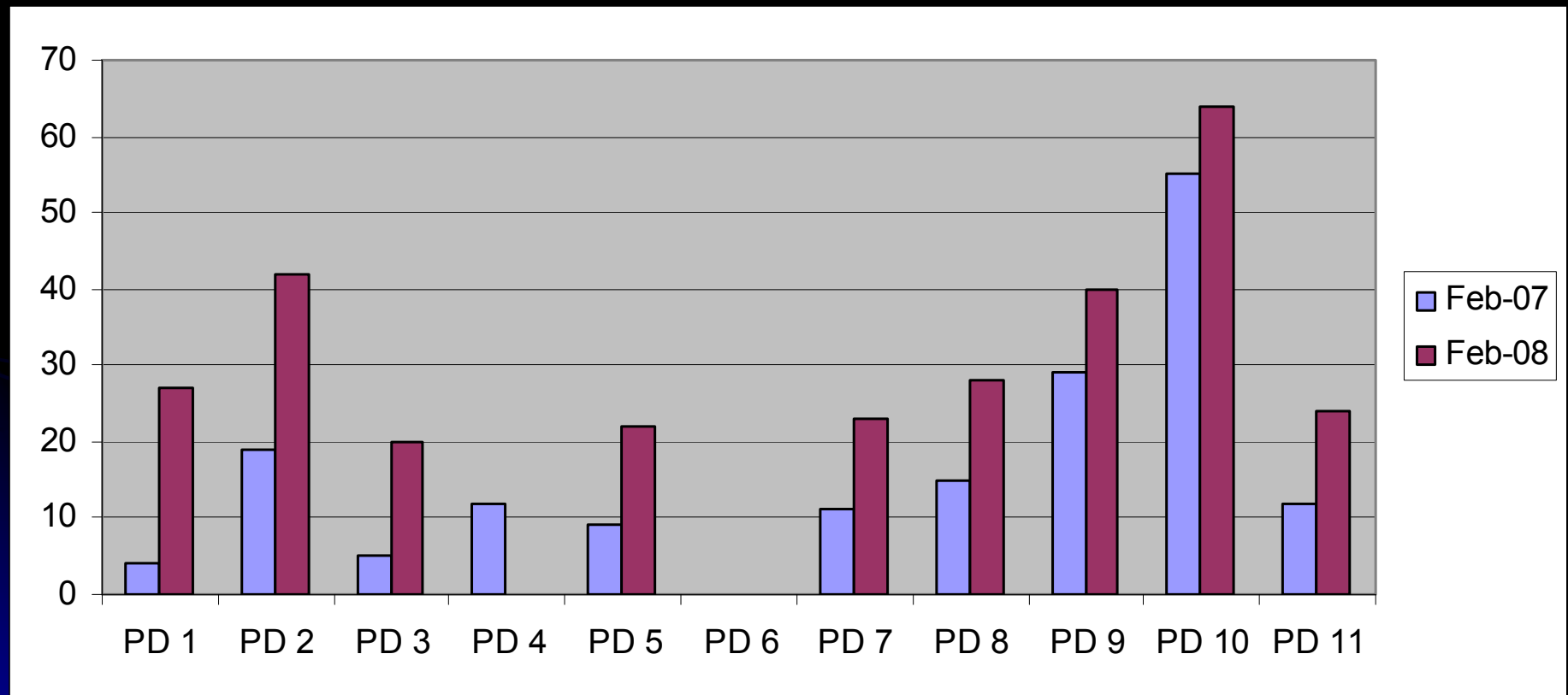
Extent of Collaboration Survey

We are interested in measuring the extent of collaboration you *currently* have with others in responding to persons with emotional disturbance. In the section below, please circle the name of the Department with which you are associated. Using the scale provided, please indicate the extent to which you currently interact and/or collaborate with each entity listed in regards to persons with emotional disturbance (skip your own row).

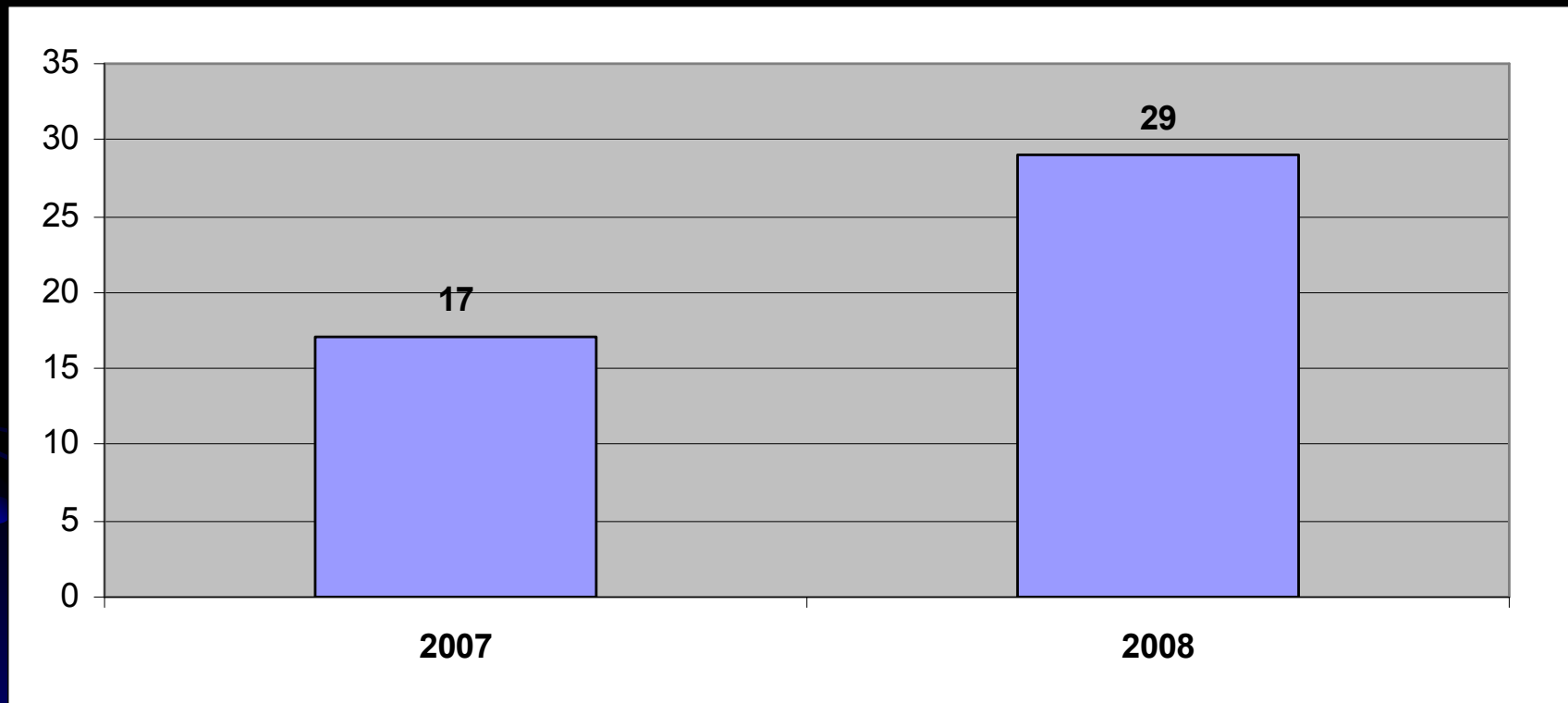
0	1	2	3	4	5
no interaction at all	aware of organization, little communication	provide info. to each other, some communication	share info. & resources, frequent communication	sharing of ideas, info. & resources, frequent communication	joint decision making regarding EDPs, sharing of ideas, info & resources

Brighton PD	0	1	2	3	4	5
Brockport PD	0	1	2	3	4	5
East Rochester PD	0	1	2	3	4	5
Fairport PD	0	1	2	3	4	5
Gates PD	0	1	2	3	4	5
Greece PD	0	1	2	3	4	5
Irondequoit PD	0	1	2	3	4	5
Ogden PD	0	1	2	3	4	5
Rochester PD	0	1	2	3	4	5
Sheriff's Dept.	0	1	2	3	4	5
Webster PD	0	1	2	3	4	5
Monroe County Office of Mental Health	0	1	2	3	4	5
Monroe County Probation	0	1	2	3	4	5
Hospital Emergency Departments	0	1	2	3	4	5
Mental Health Programs (clinics, day programs, etc.)	0	1	2	3	4	5

Departmental Reports of Collaboration

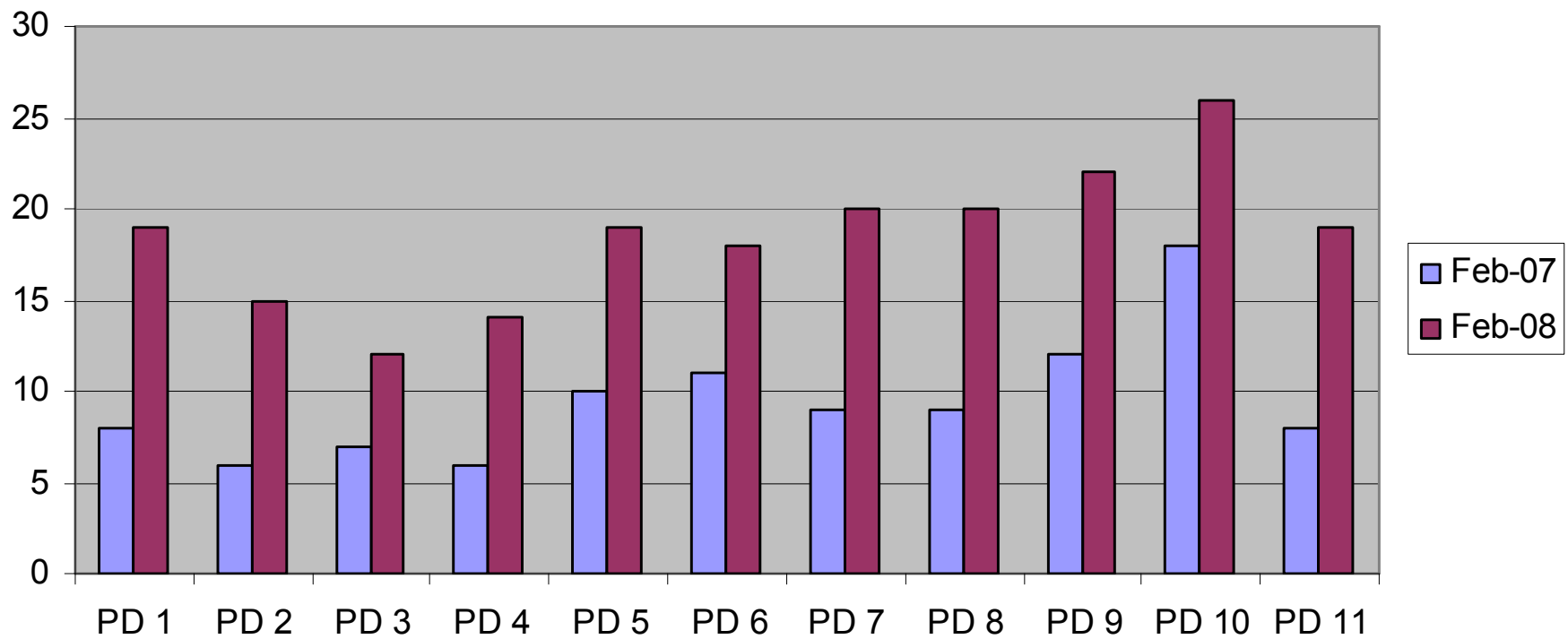


Departmental Reports - averaged

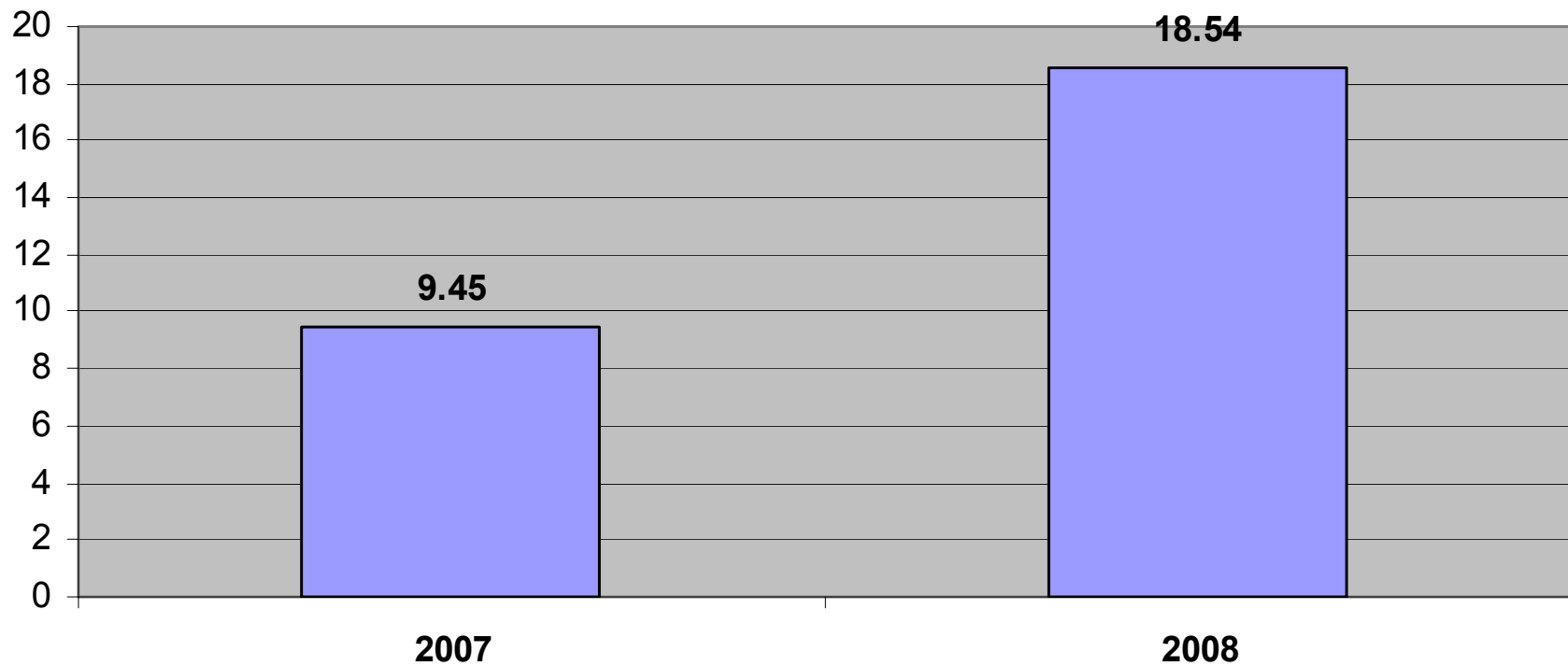


Means are significantly different, $p < .01$

Extent of Collaboration as reported by other departments

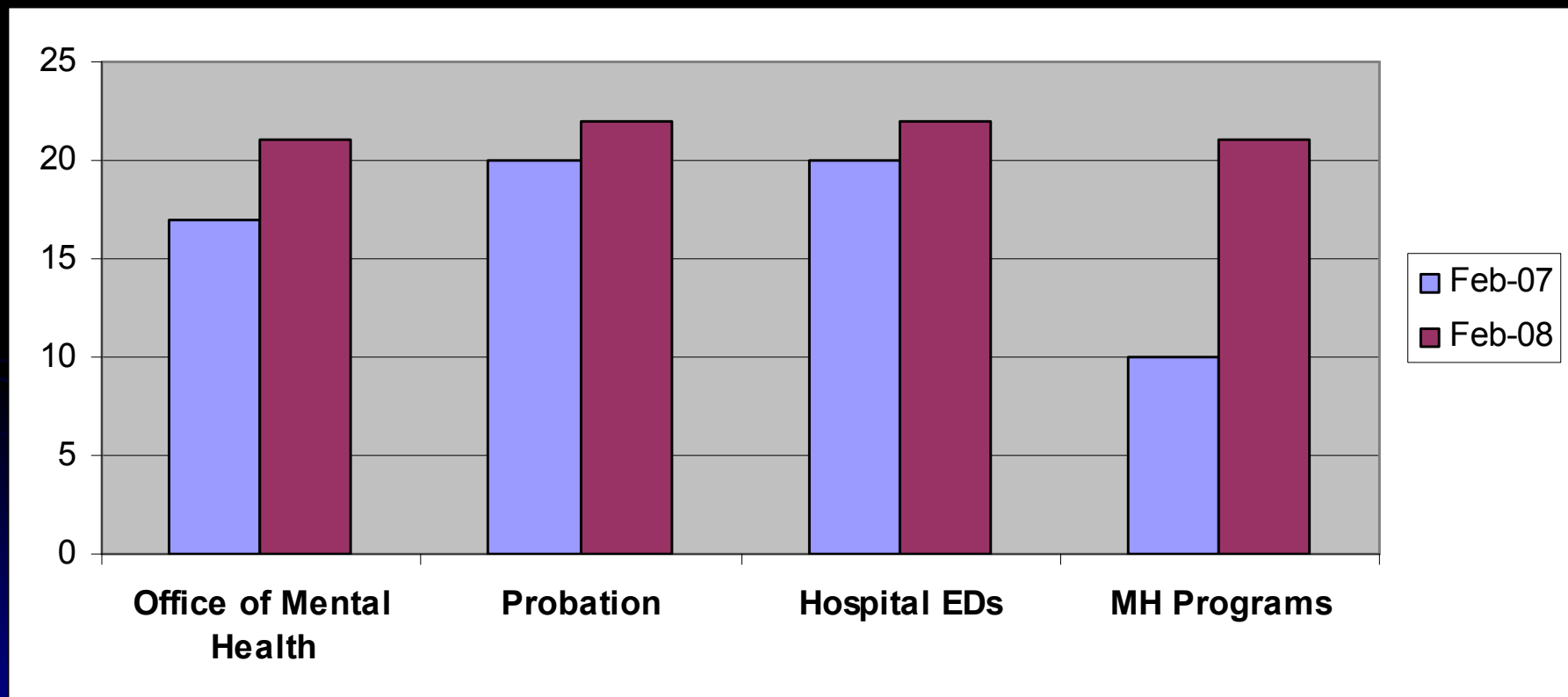


Extent of Collaboration as reported by other departments (averaged)

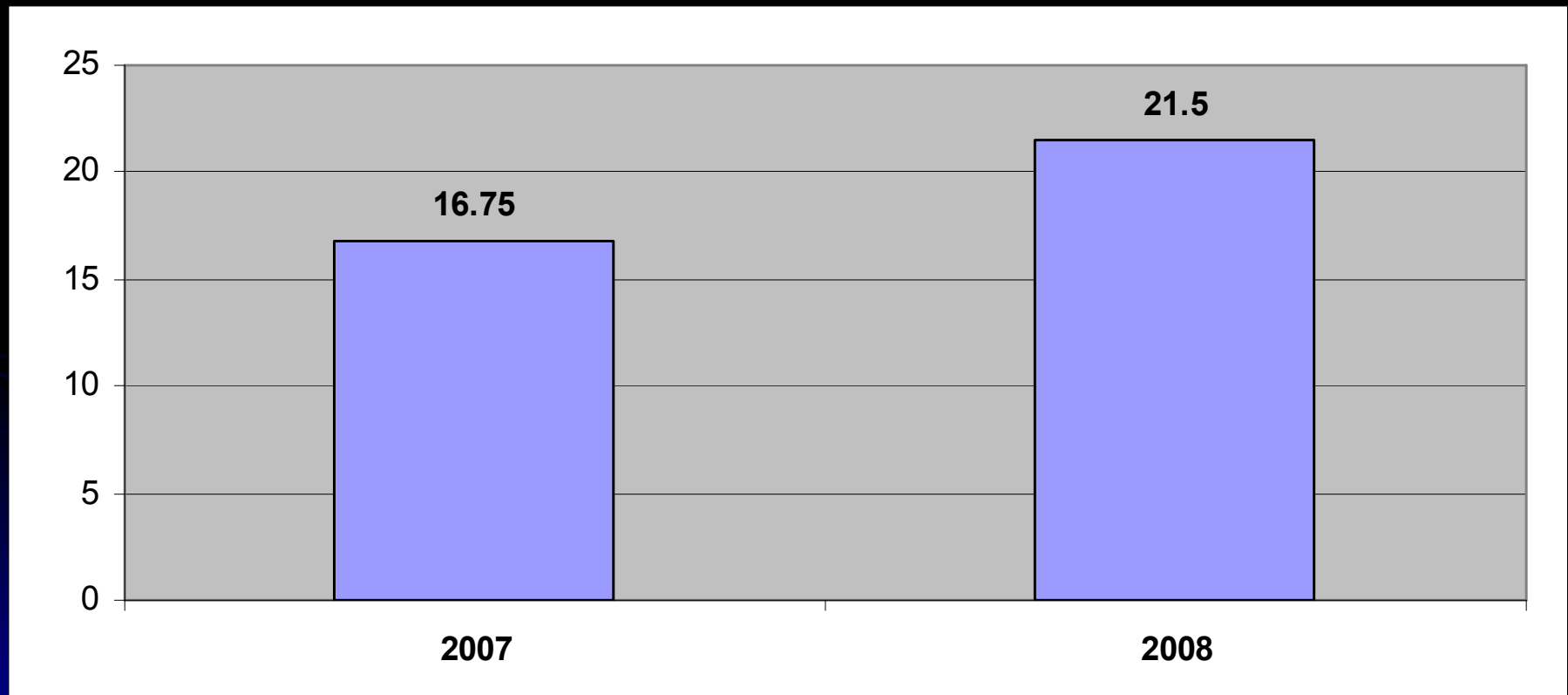


Means are significantly different, $p < .0001$

Police Departments' Reported Collaboration with Agencies



Police Departments' Reported Collaboration with Agencies – averaged



Means are not statistically significantly different, $p=.11$

Summary / Implications

- Feasible to form collaborative to support CIT-like activities
- Contact alone increases collaboration
- Need to consider strategic interventions to guide other partnerships



For additional information:

Don Kamin, Ph.D.

(585) 613-7623

dkamin@ccsi.org

